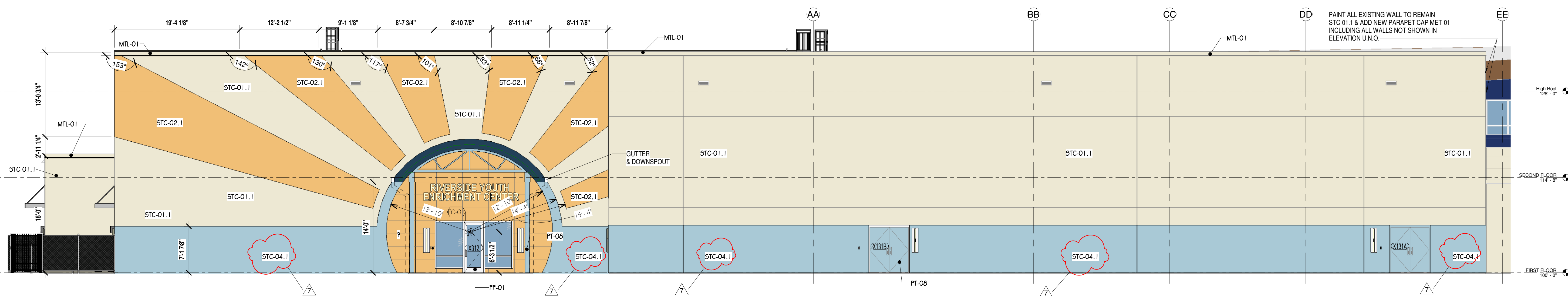
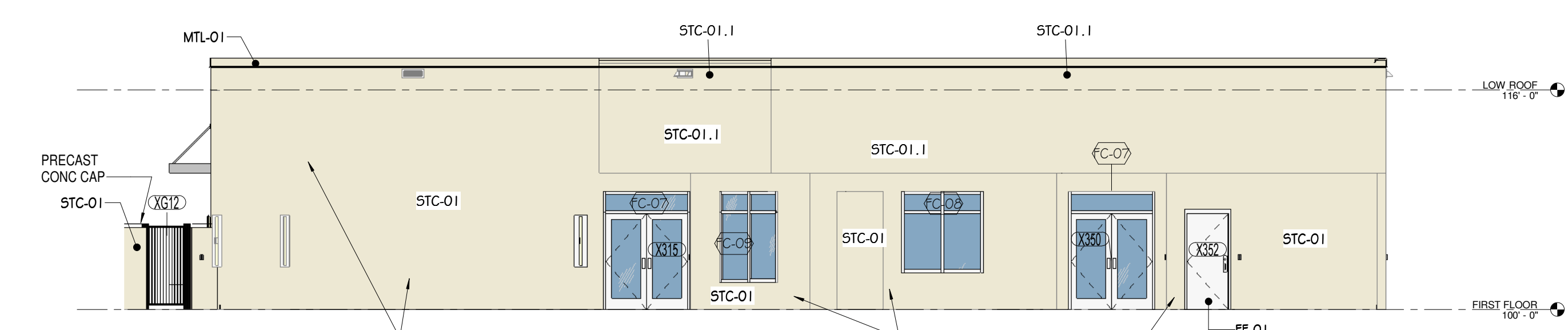


NO.	DATE:	TITLE/PURPOSE:
01/20/2023	60% CONSTRUCTION DOCUMENTS	
03/10/2023	BID PERMIT SET	
2	5/8/23	BID ADDENDUM 6
7	5/25/2023	BID ADDENDUM 13

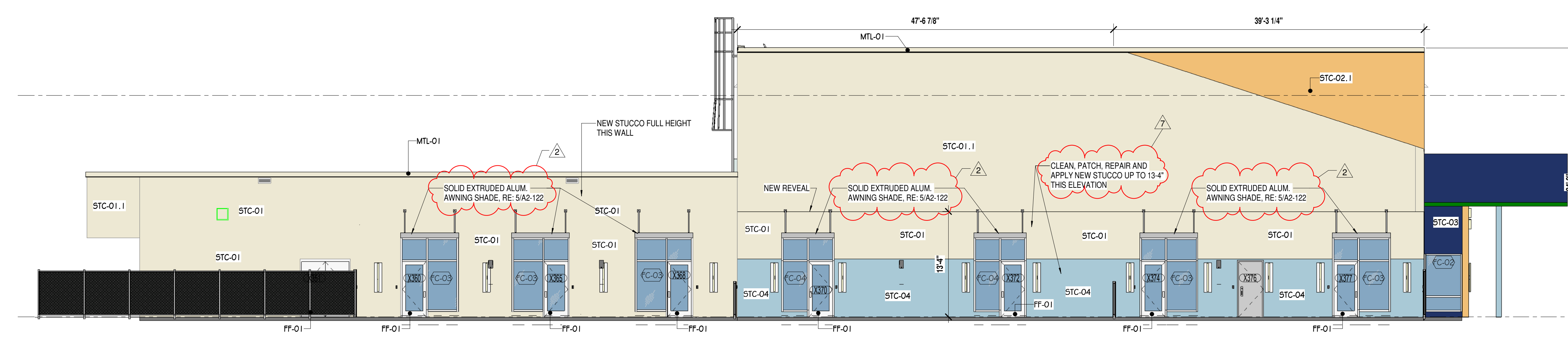


2 Elevation 2-PHASE-2
1/8" = 1'-0"

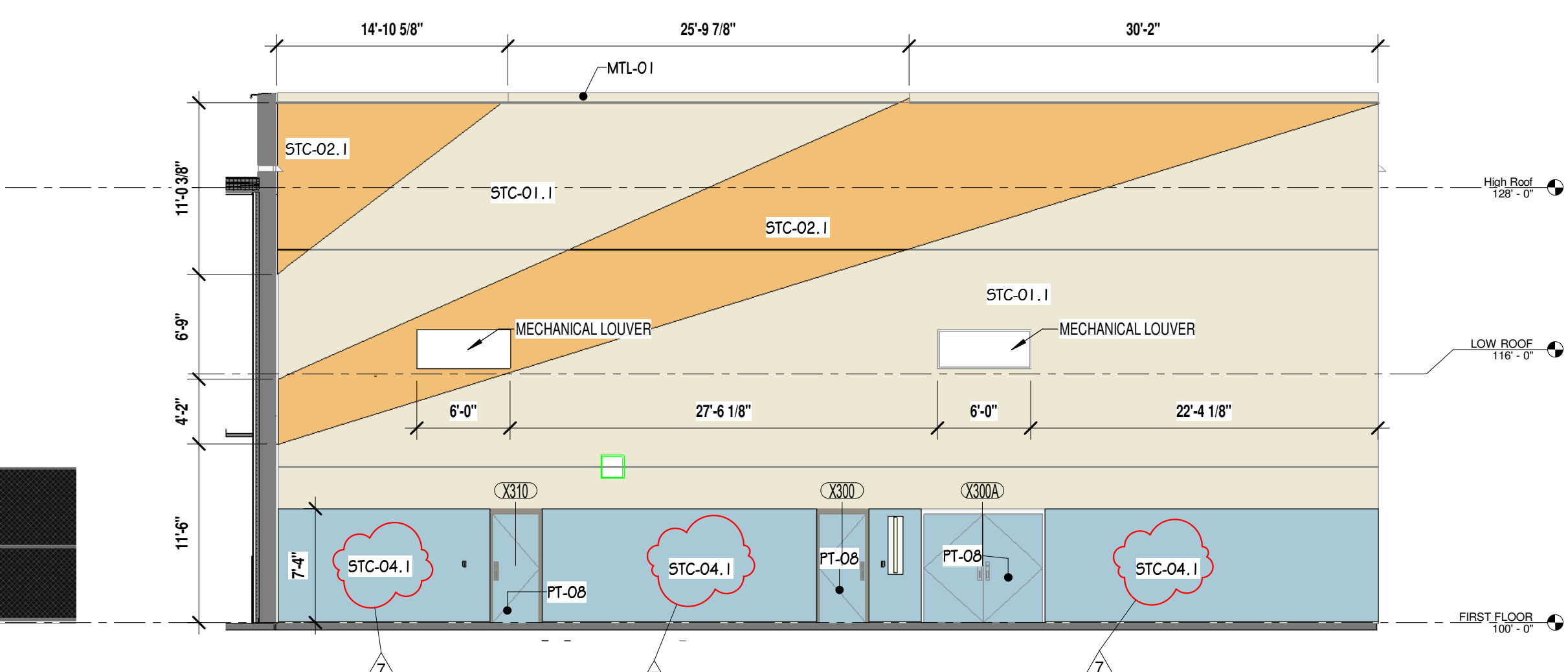


1 Elevation 6-PHASE-2
1/8" = 1'-0"

PH-2-EXTERIOR FINISH MATERIAL SCHEDULE				
NAME	APPLICATION	MANUFACTURER	PRODUCT SPECIFICATION	FINISH & STYLE
MTL-03	METAL PAINT	SHERWIN WILLIAMS	PRO INDUSTRIA ALKYL URETHANE COLOR: TO MATCH STC-03 SW G811 HONORABLE BLUE	TO MATCH GARLAND METAL PATRIOT BLUE LOW-GLOSS SHEEN
STC-01	EXTERIOR PAINT OVER STUCCO	SHERWIN WILLIAMS OVER CEMENTITIOUS STUCCO	SW 7563 RESTFUL WHITE OVER 2 OR 3 COATS STUCCO SYSTEM	EGGSHELL
STC-01.1	EXTERIOR PAINT OVER STUCCO	SHERWIN WILLIAMS OVER CEMENTITIOUS STUCCO	SW 7563 RESTFUL WHITE OVER EXISTING STUCCO	EGGSHELL
STC-02	EXTERIOR PAINT OVER STUCCO	SHERWIN WILLIAMS OVER CEMENTITIOUS STUCCO	SW 6668 SUNRISE OVER 2 OR 3 COATS STUCCO SYSTEM	EGGSHELL
STC-02.1	EXTERIOR PAINT OVER STUCCO	SHERWIN WILLIAMS OVER CEMENTITIOUS STUCCO	SW 6668 SUNRISE OVER EXISTING STUCCO SYSTEM	EGGSHELL
STC-03	EXTERIOR PAINT OVER STUCCO	SHERWIN WILLIAMS OVER CEMENTITIOUS STUCCO	SW G811 HONORABLE BLUE, TO MATCH GARLAND METAL PATRIOT BLUE	EGGSHELL
STC-04	EXTERIOR PAINT OVER STUCCO	SHERWIN WILLIAMS OVER CEMENTITIOUS STUCCO	SW 6506 VAST SKY OVER 2 COATS STUCCO SYSTEM	EGGSHELL
STC-04.1	EXTERIOR PAINT OVER STUCCO	SHERWIN WILLIAMS OVER CEMENTITIOUS STUCCO	SW 6506 VAST SKY OVER EXISTING STUCCO	EGGSHELL



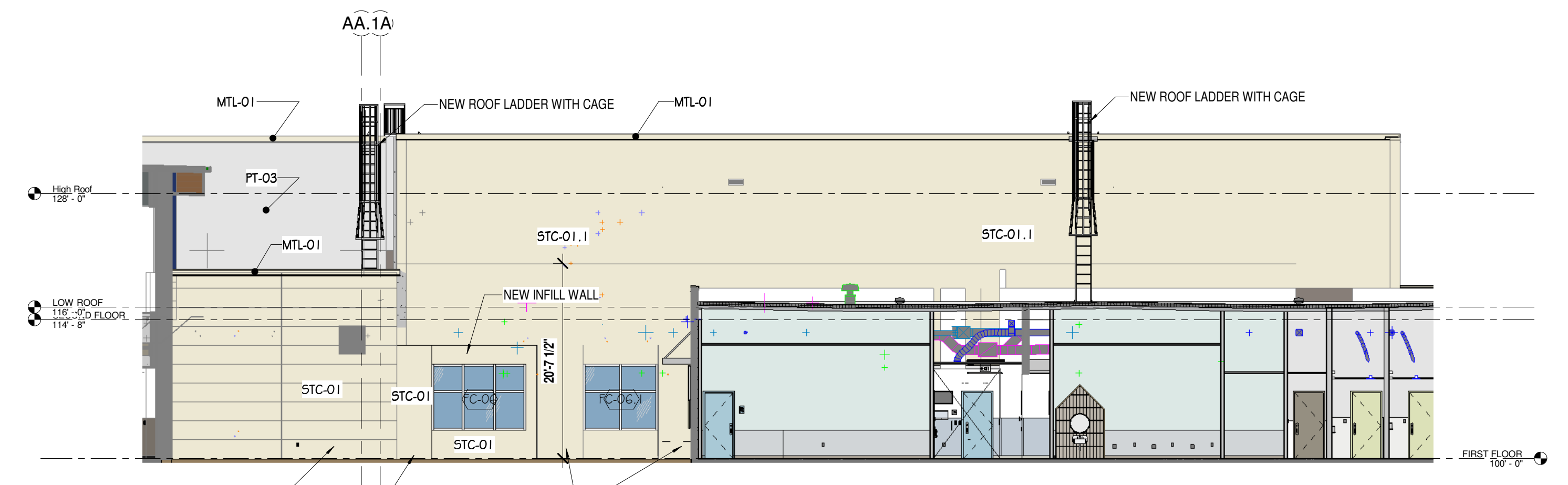
5 Elevation 5-PHASE-2
1/8" = 1'-0"



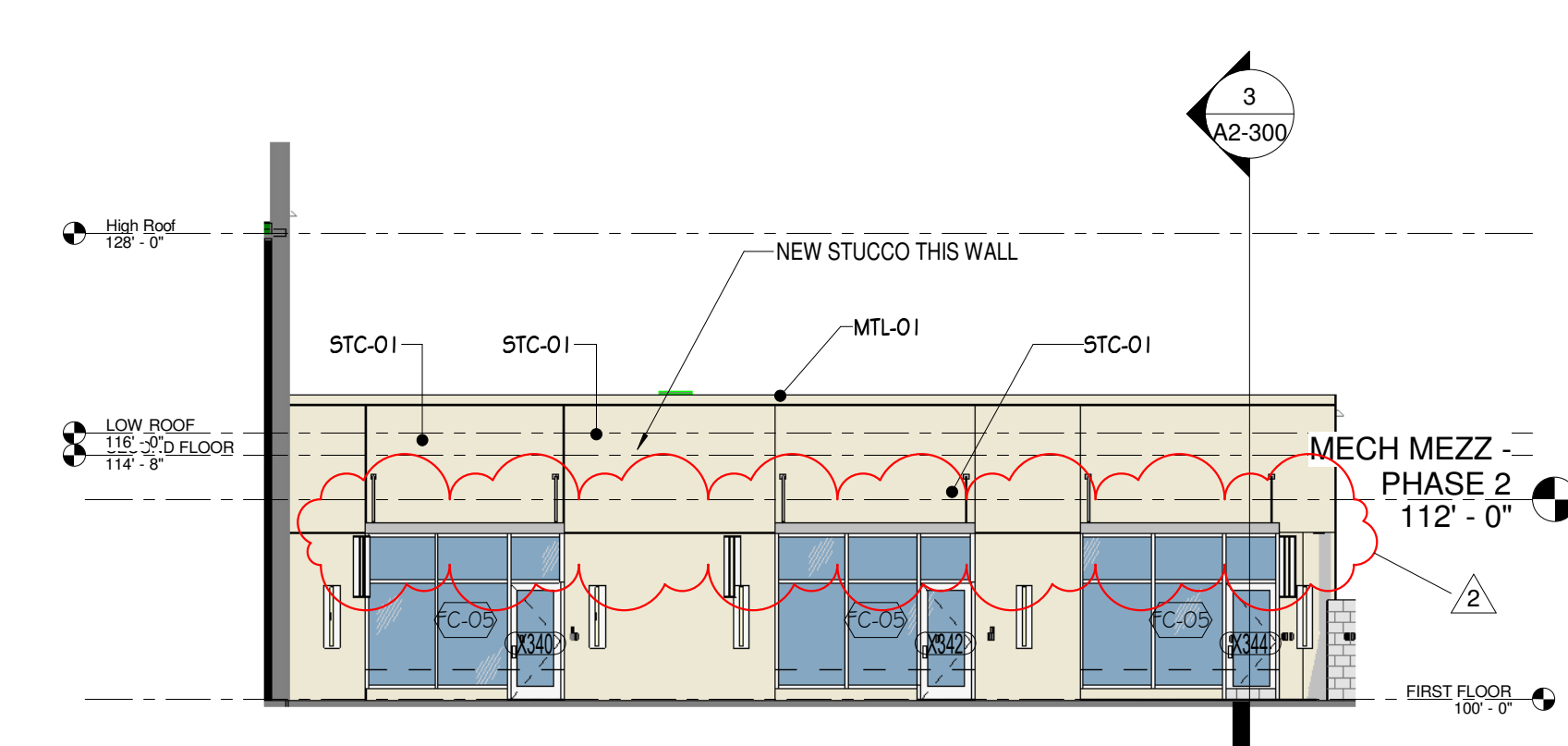
4 PARTIAL Elevation-PHASE-2
1/8" = 1'-0"

NOTE:
ALL EXISTING EXTERIOR BUILDING WALLS TO REMAIN TO BE PATCHED REPAIRED AND RE-PAINTED STC1.1 U.N.O. EVEN IF NOT SHOWN IN ELEVATIONS

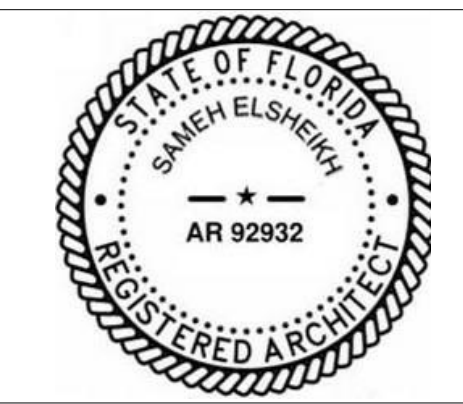
ALL EXISTING HM DOORS AND MTL FASCIA TO REMAIN TO BE PAINTED TO MATCH STC1.1 U.N.O. EVEN IF NOT SHOWN IN ELEVATIONS



7 1 - d
3/32" = 1'-0"



6 CLASSROOM ELEVATION FROM COURTYARD
3/32" = 1'-0"



SCALE: As indicated
ISSUE DATE: 03/10/2023
PROJECT #: 21077
SHEET #:

A2-201

BURNS ROAD COMMUNITY CENTER, PALM BEACH GARDENS, FL

EXTERIOR ELEVATIONS