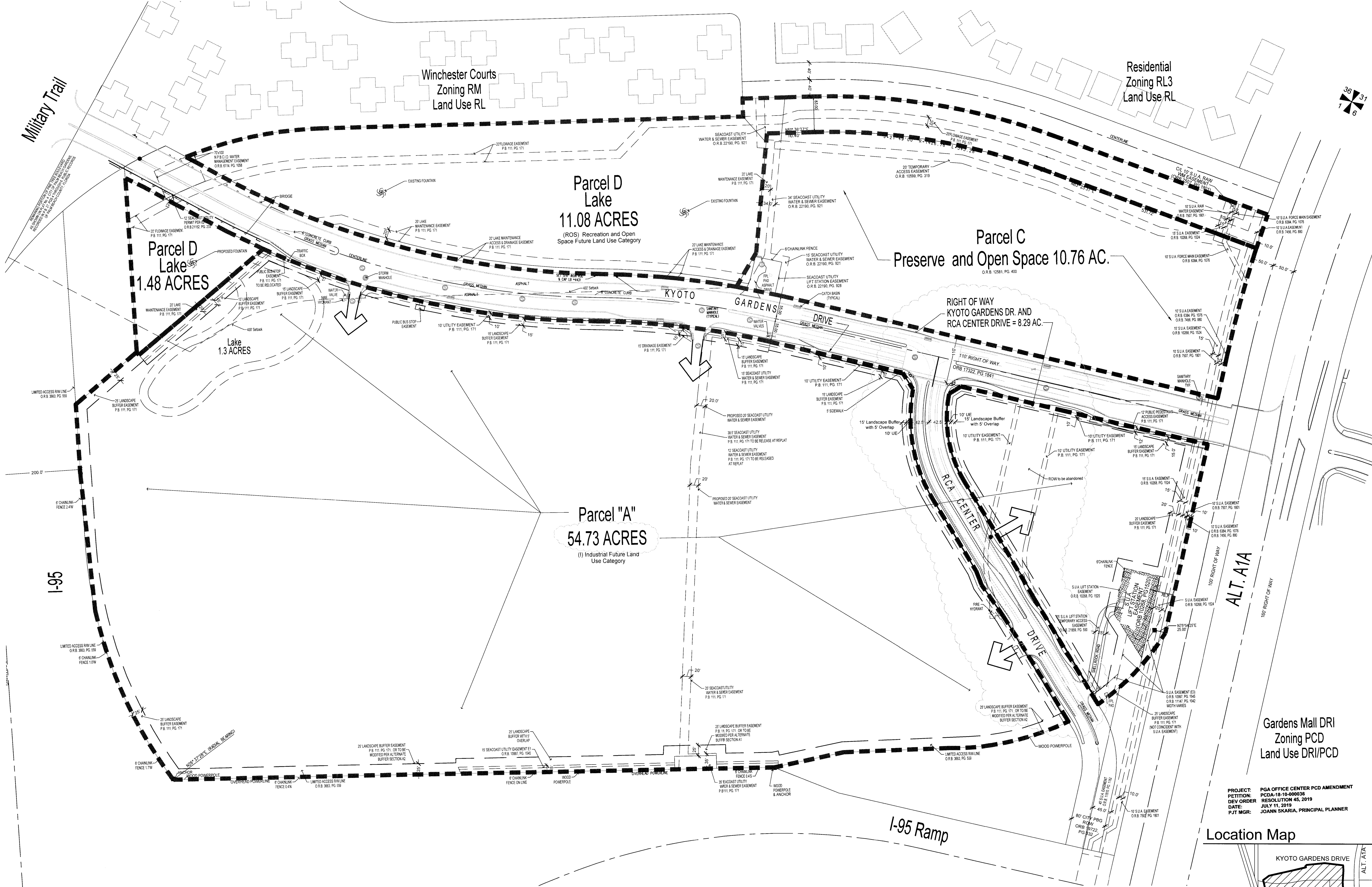


Date:	10.15.11
Project No.:	88-039.005
Designed By:	NAM
Drawn By:	NAM
Checked By:	KT

Submission Dates	Comments
11.28.11	NAM CLIENT REVIEW
12.08.11	SCM Pre-application Meeting
01.12.12	SCM Submit PCD Amendment
05.07.12	SCM Resubmit PCD Amendment
10.24.12	SCM Revise plan
12.21.12	SCM Revise plan
03.12.13	SCM Resubmit PCD Amendment
10.15.18	SCM Submit PCD Amendment
01.31.19	SCM Submit PCD Amendment
05.17.19	SCM Submit PCD Amendment



Site Data

Current Zoning	PCD (M1)
Proposed Zoning	PCD (M1)
Current Land Use	(I) Industrial & (ROS)
Proposed Land Use	(I) Industrial & (ROS)
Total Site Area	86.34 Ac.
Section/Township/Range	1/42 S/42 E 6/42 S/43 E

Site Area Breakdown

Parcels	
Parcel A -	54.73 Ac.
Parcel C (Upland Preserve and Open Space)	10.76 Ac.
Parcel D (Lakes)	12.56 Ac.
Rights of Way	8.29 Ac.
Total (Per Plat)	86.34 Ac.

Open Space Calculations

Total Site Area	86.34 Ac.
Required Open Space (20% Min. Required)	15.67 Ac.
(Open Space Calculation does not include 7.99 acres of dedicated ROW)	
Provided Open Space	31.55 Ac. (40.3%)
Preserve Area	10.00 Ac.
Lakes and Open Space Tracts	13.31 Ac.
15% of area South of Kyoto Gardens Ave.	8.24 Ac.

Development Program

Parcels	
Parcel A - (Office)	993,000 SF
Total	993,000 SF

Location Map

Scale: 1" = 100'-0"

Sheet 1 of 1

PAID BY PALM BEACH COUNTY PLANNING & ZONING

PGA Office Center
Palm Beach Gardens, Florida
PCD Master Plan

Gardens Mall DRI
Zoning PCD
Land Use DRI/PCD

PROJECT: PGA OFFICE CENTER PCD AMENDMENT
PETITION: PCDA-18-10-000036
DEV ORDER: RESOLUTION 45, 2019
DATE: JULY 11, 2019
PJT MGR: JOANN SKARIA, PRINCIPAL PLANNER